

## Wireless Networking

### Wireless LAN

The Medical-Cart Computer is often delivered with an embedded (user-inaccessible) 802.11ax WLAN adapter equipped with a hidden custom antenna.

- Through the support of typical WLAN adapters, the Medical-Grade Integrated LCD System should be able to detect all 802.11 access points in the vicinity for you to select the access point of your choice for connection.
- The SSID and WEP/WPA/WPA2 (if enabled) parameters on the Medical-Grade Integrated LCD System and the access points have to match. The SSID is case-sensitive and it is recommended that you enable WEP/WPA/WPA2 encryption (or advanced alternatives) for secure access.
- When WEP/WPA/WPA2 is enabled, you may need to consult your network administrator or your networking equipment literature to properly configure associated settings such as Authentication mode, etc.
- Refer to the access point operating manuals for setting up the 802.11 access points.

### Cleaning the Screen

- A screen cleaning solution that is alcohol-free and non-abrasive can be used to clean the touch screen.
- Cleaning with a micro-fiber cloth is recommended.
- Please spread the solution onto the cloth and then clean the touch screen.

### Cleaning the Anti-microbial Enclosure

- Use a soft/non-abrasive cloth moistened with water to clean the enclosure.
- To prevent scratching the anti-microbial coating, please wipe gently.

# DT Research Medical-Cart Computer



## BASIC OPERATION GUIDE

# 584T

### INTRODUCTION

Thank you for purchasing DT Research 584T All-in-One Medical-Cart Computer. Available in 24" display and powered by an Intel® Pentium® Gold or Core™ i processor, the 584T guarantees high-performance yet energy-efficient functionality while offering at-a-glance examination thanks to its big, easy-to-read display. With the optional hot-swappable batteries, patient data can be managed fluidly without operations being interrupted due to the act of replacing batteries, while the built-in Wi-Fi and other optional data-capture modules further improve any point-of-care applications.

Please examine the contents below to ensure a smooth set-up and startup. The All-in-One Medical-Cart Computer is ready for use out of the box in its default configuration when powered by the energy source provided. The following contents include instructions and guidance on hardware features and applications for the computer.

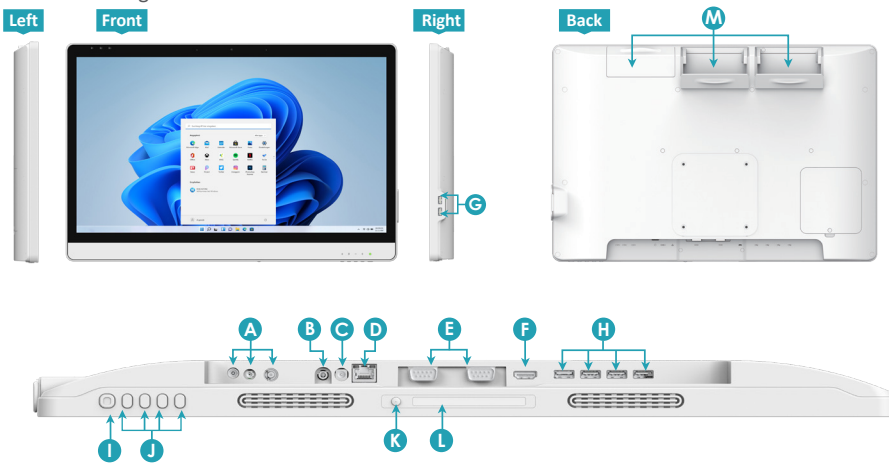
Please contact your device provider for information pertaining to software operating systems or relevant software applications.

### PACKAGE CONTENTS

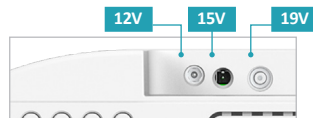
- 584T
- 3 DR202 Li-ion batteries (optional)
- AC-DC power adapter with power cord
- Basic operation guide

## I/O Ports

The Medical-Cart Computer has a comprehensive set of I/O ports. The following ports are located along the lower rear edge of the unit.



<b>A</b> DC-out (optional) 12V x 1, 15V x 1, 19V x 1	<b>H</b> USB 3.0
<b>B</b> Audio jack	<b>I</b> Power
<b>C</b> DC-in	<b>J</b> Function buttons
<b>D</b> Ethernet port (RJ45)	<b>K</b> Reading light on/off button
<b>E</b> COM ports	<b>L</b> LED reading light
<b>F</b> HDMI (1.4a)	<b>M</b> Battery slots
<b>G</b> USB 2.0	



## Battery Replacement

Hot-swappable batteries allow for quick and easy changes without interrupting a continuous operation for computer systems. To insert/replace the hot-swappable batteries for 584T:

1. Open the battery lid.
2. Hold the battery with its yellow label facing backwards and insert it into the battery slot.
3. Close the battery lid. Make sure the lid shuts tightly when closing the lid.

## PRECAUTIONS

- Always exercise care when operating and handling the Medical-Cart Computer.
- Never disassemble any portion of the enclosure, as this will void any product warranty on the Medical-Cart Computer.
- Do not use any AC/DC adapter other than the one provided with the device or a replacement acquired from the manufacturer.
- In the unlikely event that smoke, abnormal noise or strange odor is present, immediately power down the Medical-Cart Computer and disconnect all power sources. Please report the problem to your device provider immediately.

## BASIC FEATURES

The Medical-Cart Computer integrates a bright 24" display with a high performance system, USB ports, and integrated options such as capacitive touch, hot-swappable batteries, and smart card reader for a comprehensive point-of-healthcare solution.

## Powering ON and OFF

If your Medical-Cart Computer comes with the battery packs, please open the battery slot caps and then put in the battery packs one by one. If not, please use the AC-DC adapter with the Medical-Cart Computer for the power supply. To activate the Medical-Cart Computer, push and quickly release the Power Button and the display will come on in a few seconds. To put in Standby mode, push and quickly release the Power Button. To turn off for extended storage, power off the device safely using any software function that "shuts down computer" provided in the software operating system.

### NOTE:

The battery packs (optional) shipped with your device may be low in power—please use the AC-DC adapter with the Medical-Cart Computer when setting up the device for the first time to fully charge the battery packs. You may charge the battery packs with them attached to the Medical-Cart Computer, or with the optional battery charger kit.

### NOTE:

When the battery pack(s) is (are) charging, the blue-colored Battery LED should blink slowly. If plugging in the AC-DC adapter does not trigger this blinking activity and the LED stays dark, the battery pack(s) may have been drained substantially. Try unplugging/ replugging the AC-DC adapter to the Medical-Cart Computer a few times to activate the charging process.

### NOTE:

To conserve power, use (push and quick release) the Power Button to put the device in "Standby" mode while not in use. Pushing briefly on the same button will wake up the system within seconds.

### NOTE:

Avoid using the Power Button ("hold 4+ seconds" feature) to turn off the device—this form of hardware shutdown is intended to be a means of recovery from device lockups, and not as normal operation.

### NOTE:

If connecting an external monitor to the Medical-Cart Computer (via HDMI port), you must power the Medical-Cart Computer with the provided AC-DC power adapter.



## Power/Battery LED Status

- Blue indicates the battery is 25% to 100% charged
- Blinking blue indicates the battery is charging
- Orange indicates that the battery is between 11% to 25%
- Blinking Orange indicates that the battery is below 10%