

STERILE GOODS BASKETS, BASKET TROLLEY [119](#)

HOOK CARTS, WALL-MOUNTED HOOK RAIL, ACCESSORIES [120-123](#)

PACKING TABLES [124](#)

STERILE GOODS STORAGE [125](#)

PACKING PAPER TROLLEY, BUCKET STANDS, CONTAINER DOLLIES [126](#)

INSTRUMENT AND EQUIPMENT TABLES, ACCESSORIES [127-128](#)

SURGEON STEPS [129](#)

BAG CARRIER FOR OR [130](#)

KEEP, STORE,
SUPPORT

MODULE TROLLEY,
STAINLESS STEEL



Page 45 ff.

CABINET TROLLEY, RGAE



Page 96 ff.

MOBILE SHELF CART FOR STERILE GOODS



Page 125

MOBILE BUCKET
STAND



Page 126

SURGEON STEPS,
STAINLESS STEEL



Page 129

INSTRUMENT TABLES,
STAINLESS STEEL



Page 127

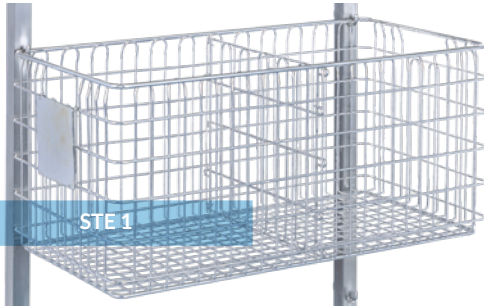
BAG CARRIER FOR OR,
STAINLESS STEEL



Page 130

STERILE GOODS BASKETS, STAINLESS STEEL

The sterile goods baskets are designed for transport, storage and sterilization of various items. They fit into the hook carts for transport and the wall-mounted hook rails for storage. All sterile items containers are equipped with recessed handles. Electropolished, burr-free stainless steel, closed wire loops, stackable base frames. Wire sizes: Upper frame 6.0 mm, wall frame 3.0 mm, loops 2.5 mm, base frame 5.0 mm



STE 1

Labeling panel, approx. 103 x 100 mm (W x H) **STE BF1**
Crosswise divider **STE Q1**



STE 1EG



STE 12

Labeling panel, approx. 100 x 65 mm (W x H) **STE BF12**
Crosswise divider **STE Q12**



STE 12ES

Labeling panel, approx. 100 x 65 mm (W x H) **STE BF12**
Crosswise divider **STE Q12ES**



STE 2

Labeling panel, approx. 103 x 100 mm (W x H) **STE BF1**



Basket trolley

For transporting two sterile goods baskets 1 STE or one sterile goods basket 2 STE.

Dimensions

680 x 780 x 860 mm (W x D x H)

TW2STE

// TECHNICAL DESCRIPTION

- + **Frame** Seamless welded stainless steel frame construction
- + **Castors** 4 swivel casters, 2 with brake, Ø 125 mm, conductive solid rubber profile

MODEL	DIMENSIONS			LOOP DISTANCE		WEIGHT CAPACITY approx. kg	ORDER CODE STERILE GOODS BASKETS	ORDER CODE CROSSWISE DIVIDER	ORDER CODE LABELING PANEL
	WIDTH mm	DEPTH mm	HEIGHT mm	WALL mm	BASE mm				
Sterile goods basket 1 STE	575	280	265	20 x 40	20 x 20	30	STE 1	STE Q1	STE BF1
Sterile goods basket 1 STE with access opening	575	280	265	20 x 40	20 x 20	30	STE 1EG	STE Q1	STE BF1
Sterile goods basket 1/2 STE	575	280	135	20 x 35	20 x 20	20	STE 12	STE Q12	STE BF12
Sterile goods basket 1/2 STE with access slot	575	280	135	20 x 35	20 x 20	20	STE 12ES	STE Q12ES	STE BF12
Sterile goods basket 2 STE	575	560	265	20 x 40	20 x 20	30	STE 2	-	STE BF1

HOOK CARTS, STAINLESS STEEL



SINGLE SIDED HOOK CART

- Loadable from one side, this cart features a seamless frame construction of stainless steel square tubing with hooks to accommodate 3 to 4 STE baskets or accessories
- Each hook has a weight capacity of 30 kg

// TECHNICAL DESCRIPTION

- + **Casters** 4 swivel casters, 2 with double brake, Ø 75 mm, with precision ball bearing
- + **Tread** Thermoplastic conductive rubber profile, wear-resistant, non-marking
- + **Caster housing** Zinc-chromated, with bumpers



NO. OF HOOK SETS	HOOK SPACING mm	DIMENSIONS			ORDER CODE
		WIDTH mm	DEPTH mm	HEIGHT mm	
3	400	610	475	1463	HKW 3
4	320	610	475	1623	HKW 4



DOUBLE SIDED HOOK CART

- Loadable from both sides, this cart features a seamless frame construction of stainless steel square tubing with hooks to accommodate 2 x 3 or 2 x 4 sterile goods baskets or accessories
- Each hook has a weight capacity of 30 kg

// TECHNICAL DESCRIPTION

- + **Casters** 4 swivel casters, 2 with double brake, Ø 75 mm, with precision ball bearing
- + **Tread** Thermoplastic conductive rubber profile, wear-resistant, non-marking
- + **Caster housing** Zinc-chromated, with bumpers



NO. OF HOOK SETS	HOOK SPACING mm	DIMENSIONS			ORDER CODE
		WIDTH mm	DEPTH mm	HEIGHT mm	
6	400	610	670	1463	HKW 6
8	320	610	670	1623	HKW 8

HOOK CARTS, STAINLESS STEEL



CHKW8

- This cart features a seamless welded frame construction of stainless steel square tubing with external hooks to accommodate 2 x 4 sterile goods baskets or accessories
- The center is equipped with headed dowels spaced at 75 mm for slides to accommodate 1 STE or 1/2 STE sterile goods baskets or containers
- Delivery includes 4 pairs of CES55 slides
- Each hook has a weight capacity of 30 kg
- Total weight capacity of the cart is 100 kg

// TECHNICAL DESCRIPTION

- + **Casters** 4 swivel casters, 2 with double brake, Ø 75 mm, with precision ball bearing
- + **Tread** Thermoplastic conductive rubber profile, wear-resistant, non-marking
- + **Caster housing** Zinc-chromated, with bumpers



NO. OF HOOK SETS	HOOK SPACING mm	DIMENSIONS			ORDER CODE
		WIDTH mm	DEPTH mm	HEIGHT mm	
8	335	1000	610	1653	CHKW8

STAINLESS STEEL SLIDES

- for combination hook cart



MODEL	SUPPORT SURFACE mm	ORDER CODE
Pair of push-in rails with transport restraint for combi-hook trolley	58	CES55

WALL-MOUNTED HOOK RAIL

- 25 x 25 mm square tube made of stainless steel with welded hooks to accommodate sterile goods baskets or accessories
- Each hook has a weight capacity of 30 kg
- Threaded bolts for potential equalization
- The ends of the tubes are covered with polymer caps



NO. OF HOOKS	HOOK SPACING mm	LENGTH mm	ORDER CODE 1 PIECE
4	215	900	WHS 214
6	215	1300	WHS 216
7	215	1600	WHS 217
2	350	700	WHS 352
3	350	1050	WHS 353
4	350	1400	WHS 354
5	350	1750	WHS 355
2	410	900	WHS 412
3	410	1300	WHS 413
4	410	1600	WHS 414

ACCESSORIES FOR HOOK CARTS



Multi-purpose equipment holder

Utility bar 25 x 10 mm made of burr-free stainless steel, ideal for storing various anesthesia and O.R. accessories.

WIDTH mm	DEPTH mm	HEIGHT mm	ORDER CODE
600	48	180	HKW FS



Paper storage

For storage of sterilized packaging paper. Made of burr-free stainless steel.

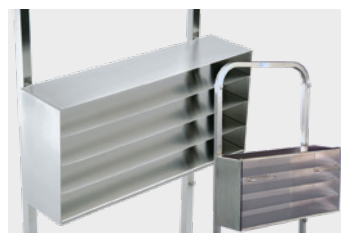
WIDTH mm	DEPTH mm	HEIGHT mm	ORDER CODE
560	250	300	HKW PA



Polymer containers

Ideal for storing laboratory tools and instruments as well as hospital utensils. They are stackable and integrate into the universal holder. Available colors: blue and green; material: polypropylene.

SIZE + COLOR	WIDTH mm	DEPTH mm	HEIGHT mm	ORDER CODE
Size 3, blue	210	350	200	KC 32
Size 4, blue	150	230	125	KC 42
Size 5, blue	100	170	75	KC 52
Size 3, green	210	350	200	KC 31
Size 4, green	150	230	125	KC 41
Size 5, green	100	170	75	KC 51



Suture storage

Made of burr-free stainless steel with 2-4 compartments which can accommodate 10-20 commercially available packages of suture materials.

HKW NM4 HKW NM4 PETG

COMPARTMENTS	WIDTH mm	DEPTH mm	HEIGHT mm	ORDER CODE
2	600	170	145	HKW NM2
4	600	170	290	HKW NM4
4*	600	170	290	HKW NM4 PETG

* closed version, front transparent



Wire container

Integrates into the universal holder. Material: stainless steel

WIDTH mm	DEPTH mm	HEIGHT mm	ORDER CODE
150	230	125	KCE4



Multi-purpose holder

Multi-purpose storage to accommodate multiple hospital or laboratory articles. Made of burr-free stainless steel with chamfered edges.

WIDTH mm	DEPTH mm	HEIGHT mm	ORDER CODE
600	360	260	HKW MA



Universal holder

Made of burr-free stainless steel, to accommodate all polymer KC and wire containers

HKW UH1:
KC 31 to KC 52, KCE 4
HKW UH2: only for container sizes 4 and 5

MODEL	WIDTH mm	DEPTH mm	HEIGHT mm	ORDER CODE
Single model	660	25	100	HKW UH1
Double model	660	25	395	HKW UH2



Universal storage shelf

Made of burr-free stainless steel. Evenly distributed weight capacity: 10 kg.

WIDTH mm	DEPTH mm	HEIGHT mm	ORDER CODE
690	350	165	HKW AB35
690	450	165	HKW AB45
690	600	165	HKW AB60

ACCESSORIES FOR HOOK CARTS



Laundry and waste bag holder
Made of burr-free and seamless welded stainless steel, including HR 2000 grip ring.

WIDTH mm	DEPTH mm	HEIGHT mm	ORDER CODE
550	327	315	HKW WS



Shoe holder
Made of burr-free electropolished stainless steel, with closed wire loops to accommodate a maximum of 6 pairs of shoes.

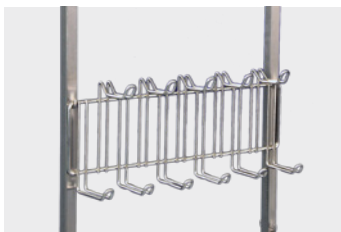
Wire sizes: Loops 6 mm, Frame 8 mm

WIDTH mm	DEPTH mm	HEIGHT mm	ORDER CODE
600	260	180	HKW SH



X-Ray image holder
Made of burr-free electropolished stainless steel.
Wire Size: 5 mm

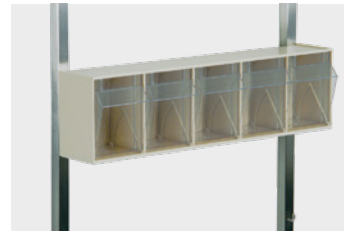
WIDTH mm	DEPTH mm	HEIGHT mm	ORDER CODE
580	150	575	HKWRH



Tube and OR towel holder
Made of burr-free electropolished stainless steel, with 11 closed wire loops to accommodate anesthesia tubes and OR towels.

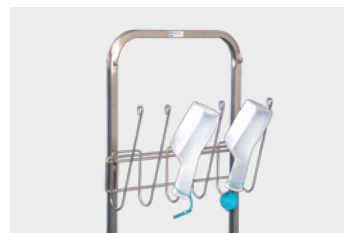
Wire sizes: Loops 6 mm,
Frame 8 mm

WIDTH mm	DEPTH mm	HEIGHT mm	ORDER CODE
600	115	180	HKW SB



Polymer bin storage
Ideal for storing small hospital articles as well as small laboratory tools and instruments. Consists of a light gray polymer frame with clear acrylic boxes.

NO. OF BINS	WIDTH mm	DEPTH mm	HEIGHT mm	ORDER CODE
3	600	165	250	HKW 3SH
5	600	120	170	HKW 5SH
First-in-First-out				
3 - ffo	600	165	250	HKW 3SFH
5 - ffo	600	120	170	HKW 5SFH



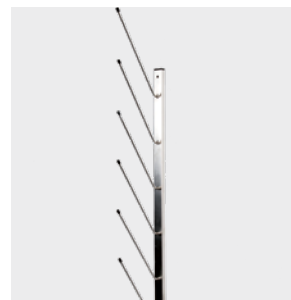
Urine bottle holder
Made of burr-free electropolished stainless steel.
Wire size: Loops 6 mm

NO. OF HOLDER	WIDTH mm	DEPTH mm	HEIGHT mm	ORDER CODE
6	645	22	115	HKW UFH



Shoe rack
Made of burr-free stainless steel. Double sided. Will accommodate 6 pairs of shoes. Shoe ID is visible at the heel. Wire size: 6 mm

WIDTH mm	DEPTH mm	HEIGHT mm	ORDER CODE
600	320	270	HKW SR



Wall-mounted urine bottle holder WUFH6

NO. OF HOLDER	WIDTH mm	DEPTH mm	HEIGHT mm	ORDER CODE
2	30	210	350	WUFH2
4	30	210	650	WUFH4
6	30	210	950	WUFH6
2	230	250	350	WSBH2
4	230	250	650	WSBH4
6	230	250	950	WSBH6



Wall-mounted bed pan holder WSBH4

MOBILE PACKING TABLE, STAINLESS STEEL



PTF7515

The Hammerlit mobile packing table is especially designed to wrap operating instruments. The basic table can be completed by shelves from the Classic Shelving System.

The shelves are 600 mm deep and adjustable (75 mm spacing). Shelves with a smaller depth can be fixed in 2 positions.

The rear hook frame (optional) can be equipped with accessories (see pages 121-122). The face sides of the table are equipped with 2 pairs of hooks to hold a wire basket.



THS3508

Table hook frame, stainless steel construction, made of seamless welded 25 x 25 mm square tubes. 2 x 2 pairs of hooks, spaced at 350 mm.

// TECHNICAL DESCRIPTION

+ Frame

Table completely made of stainless steel. Sturdy framework made of seamless welded 30 mm square tubes, working surface made of 1.5 mm sheet metal, with supporting frame

+ Casters

4 swivel casters, 2 with double brake, Ø 125 mm, conductive solid rubber profile

+ Caster housing

Zinc-chromated



PTF7515 Packing table with accessories

MODEL	DIMENSIONS			ORDER CODE
	WIDTH mm	DEPTH mm	HEIGHT mm	
Table	1510	750	900	PTF7515
Shelf	1500	600		CG615
Shelf	1500	400		CG415
Hook frame	1345	42	1500	THS3508



„We provide comprehensive advise to find the best solution!“

STERILE GOODS STORAGE, STAINLESS STEEL



EGSTE15

MOBILE SHELF CART FOR STERILE GOODS

Shelf cart with wire shelves to accommodate max. 12 1 STE sterile goods baskets or 6 1/2 STE sterile goods baskets. Construction made of 25 mm square tube, material: stainless steel. Framework is fitted with a fixed bottom shelf and 5 adjustable stainless steel wire shelves, adjustable at a raster of 88 mm. All shelves are burr-free.

// TECHNICAL DESCRIPTION

- + **Casters** 4 swivel casters, 2 with double brake, Ø 125 mm, with precision ball bearing
- + **Tread** Conductive solid rubber profile
- + **Caster housing** Stainless steel

CAPACITY	DIMENSIONS			ORDER CODE
	WIDTH mm	DEPTH mm	HEIGHT mm	
12 x 1 STE and 6 x 1/2 STE	950	600	1970	EGSTE15

SHELF CART CLASSIC

The seamless welded stainless steel frame construction features 5 closed Classic stainless steel shelves which are height adjustable at a raster of 150 mm (refer to page 169).



CF612G5

// TECHNICAL DESCRIPTION

- + **Casters** 4 swivel casters, 2 with double brake, Ø 125 mm
- + **Tread** Conductive solid rubber profile
- + **Caster housing** Zinc-chromated

DIMENSIONS	WIDTH mm	DEPTH mm	HEIGHT mm	ORDER CODE
	600	400	1450	CF406G5-1450
	1000	400	1450	CF410G5-1450
	1200	400	1450	CF412G5-1450
	800	500	1750	CF508G5
	1000	500	1750	CF510G5
	1200	500	1750	CF512G5
	1500	500	1750	CF515G5
	1000	600	1750	CF610G5
	1200	600	1750	CF612G5
	1500	600	1750	CF615G5



Classic 40/60 tray storage

CLASSIC 40/60 TRAY STORAGE

With connectors, Classic side panels can be lined up to create a sturdy rack unit. Equipped with height adjustable stainless steel U-slides CESU60 this rack is ideal for storage of 40/60 trays.

With special adapters it is also possible to install polymer tray panels. Easy mounting without tools. Easy cleaning because of easy dismantling.

While connecting several units of shelving, every third unit should be equipped with a cross brace.



HLPS2

PACKING PAPER TROLLEY, STAINLESS STEEL

Packing paper trolley with welded base to accommodate sterile paper. 4 bars of round tube for packing paper sheets. Swivable bows fix the sheets. Mobile construction made of seamless 25 x 25 mm square tube design, stainless steel material.

- 4 swivel casters, 2 with double brake, Ø 75 mm
- With precision ball bearing
- Thermoplastic conductive rubber profile
- Caster housing: zinc-chromated



WIDTH mm	DEPTH mm	PAPER BAR HEIGHT mm	PUSH HANDLE HEIGHT mm	ORDER CODE
1465	780	975	1075	HLPS2



OP FE15BSG



OP FE15B

MOBILE BUCKET STAND

- Conductive polymer carriage
- Stainless steel bucket
- Conductive swivel casters with stainless steel housing, Ø 75 mm
- Easy to clean carrier with bumpers made of conductive polymer
- Bucket dimensions: Height: 410 mm, Ø 410 mm

MODEL	ORDER CODE
Stainless steel bucket 15 l	OP E15B
Carrier incl. bucket	OP FE15B
Carrier with push handle incl. bucket	OP FE15BSG



OPCTW 640



OPCTW

CONTAINER DOLLY, STAINLESS STEEL

- Container dolly for Professional Workflow in OR
- Mobile construction made of seamless welded 25 x 25 mm square tube design, stainless steel material
- Accommodates sterile goods containers without lids and provides storage space for container lids and instrument tray
- 4 swivel casters, Ø 75 mm, 2 with double brake
- With precision ball bearing, thermoplastic conductive rubber profile, wear-resistant, non-marking
- Caster housing: zinc-chromated

DIMENSIONS			ORDER CODE
WIDTH mm	DEPTH mm	HEIGHT mm	
660	405	840	OPCTW
660	405	840	OPCTW 400*
660	640	840	OPCTW 640*

*with staging area

INSTRUMENT AND EQUIPMENT TABLES, STAINLESS STEEL



ITF 6242

MOBILE INSTRUMENT AND EQUIPMENT TABLE BASED ON IT 6242 (MODELS ITF AND GTF)

- 4 swivel casters, 2 with double brake, Ø 75 mm
- With precision ball bearing
- Thermoplastic conductive rubber profile
- Caster housing: zinc-chromated
- With bumpers
- Load rating max. 150 kg



AW 6242

MULTI-PURPOSE TROLLEY (MODELS AW)

- Multi-purpose trolleys made of stainless steel
- Stable square seamless stainless steel 25 mm tube steel construction with 2 smooth table tops are welded to the frame
- Tube frame at top closed by welded plates
- 4 swivel casters, 2 with double brake, Ø 75 mm, with precision ball bearing
- Thermoplastic conductive rubber profile
- With bumpers
- Load rating 150 kg



IT 6242

STATIONARY INSTRUMENT AND EQUIPMENT TABLE (MODELS IT AND GT)

- Instrument and equipment tables made of stainless steel
- Stable square seamless stainless steel 25 mm tube design
- Removable table tops with guard
- Conductive design
- Load rating 150 kg

MODEL	DIMENSIONS			USABLE AREA OF THE TABLETOPS (W X D)	ORDER CODE STATIONARY	ORDER CODE MOBILE	ORDER CODE MOBILE WITH PUSH HANDLE*
	WIDTH mm	DEPTH mm	HEIGHT mm				
Instrument table	625	425	800	572 x 372 mm	IT 6242	ITF 6242	ITFG 6242
Instrument table	720	625	800	667 x 572 mm	IT 7262	ITF 7262	ITFG 7262
Instrument table	940	625	800	887 x 572 mm	IT 9462	ITF 9462	ITFG 9462
Equipment table	625	425	650		GT 6242	GTF 6242	GTFG 6242
Equipment table	720	625	650		GT 7262	GTF 7262	GTFG 7262
Equipment table	940	625	650		GT 9462	GTF 9462	GTFG 9462
Multi-purpose trolley	625	425	800		AW 6242	AWG 6242	AWG 6242
Multi-purpose trolley	720	625	800		AW 7262	AWG 7262	AWG 7262
Multi-purpose trolley	940	625	800		AW 9462	AWG 9462	AWG 9462

*The width increases by 100 mm in the mobile model with sliding handle

ACCESSORIES FOR INSTRUMENT TABLES

SPECIAL EQUIPMENT FOR INSTRUMENT TABLES



+ Push handle



+ Side worktop, foldable



FOLD DOWN SIDE SHELF	TABLE DEPTH mm	ORDER CODE
For IT/ITF	425	IT AP42
For IT/ITF	625	IT AP62
For AW 6242	425	AW AP42
For AW 7262/9462	625	AW AP62

! The modular drawers can be found on page 128. Custom tables on request.

ACCESSORIES FOR INSTRUMENT TABLES

TABLE DEPTH 425	FOR MODULE SIZE	USABLE HEIGHT	ORDER CODE
Drawer substructure			IT ML34-3HE
Module drawer	300x400 mm	Usable height approx. 55 mm	IT ML34M1LG
Module drawer	300x400 mm	Usable height approx. 110 mm	IT ML34M2LG
Module drawer	300x400 mm	Usable height approx. 170 mm	IT ML34M3LG
Soft close for module drawer			IT ML34SC

TABLE DEPTH 625	FOR MODULE SIZE	USABLE HEIGHT	ORDER CODE
Drawer substructure			IT ML64-3HE
Module drawer	600x400 mm	Usable height approx. 55 mm	IT ML64M1LG
Module drawer	600x400 mm	Usable height approx. 110 mm	IT ML64M2LG
Module drawer	600x400 mm	Usable height approx. 170 mm	IT ML64M3LG
Soft close for module drawer			IT ML64SC



ITF 7262 with
IT ML64M1LG and
IT ML64M2LG



**Catheter box,
stainless steel**
With hooks to hang
on instrument table,
electropolished.
Dimensions approx.
150 x 100 x 480 mm
(W x D x H)

ITKK6



I.V. pole
with 2 hooks,
height adjustable.

ITIH 2E



**Wipe disinfectant bin
with lid**
Including swiveling holder
and multi-purpose holder
made of solid plastic.
Dimensions approx. 445 x
105 x 137 mm (W x D x H).
Order code **ITZ3WSA**



3-way guard Material:
stainless steel. Height 70 mm

FITTING TO TABLE	ORDER CODE
IT6242 and ITF6242	ITG364
IT7262 and ITF 7262	ITG376
IT9462 and ITF9462	ITG396



Work top for dispenser
Incl. 4-way guard.
Material: stainless steel.



Dispenser
(First-In-First-Out-System)
incl. stainless steel
attachable frame.

! More dispensers can
be found on page
36!

NO. OF DISPENSER	WIDTH mm	DEPTH mm	HEIGHT mm	ORDER CODE
3-comp.	594	159	20	TB3SH
5-comp.	594	105	20	TB5SH

NO. OF DISPENSER	WIDTH mm	DEPTH mm	HEIGHT mm	ORDER CODE
3 comp.	600	200	245	IT6Z3SFH
5 comp.	600	135	165	IT6Z5SFH



Swivel S/S bowl
Material: stainless steel.
Adapter made of solid
plastic.

ITASR



Swivel rectangle bin
Material: stainless steel.
Adapter made of solid
plastic.

ITASE



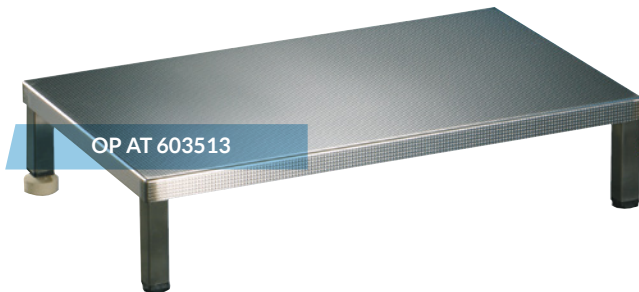
**Norm rail
for instrument tables**

! More norm rails can be
found on page 35!

NORM RAIL FOR	USABLE LENGTH mm	ORDER CODE
IT/AW 6242, narrow side	ca. 350 mm	IT 42 NP
IT/AW 6242, wide side	ca. 550 mm	IT 62 NP
IT/AW 7262, wide side	ca. 650 mm	IT 72 NP
IT/AW 9462, wide side	ca. 870 mm	IT 94 NP

SINGLE SURGEON STEPS, STAINLESS STEEL

- Stable 4-footed single step construction
- Made of 25 mm square tube seamless welded stainless steel
- With removable stainless steel non-slip plate
- Ribbed tread for easy cleaning
- 2 non-slip, non-marking adjustable rubber feet
- 2 conductive polymer screw-in feet



NO. OF STEPS	DIMENSIONS			ORDER CODE
	WIDTH mm	DEPTH mm	HEIGHT mm	
1 step	605	355	130	OP AT 603513
1 step	605	355	220	OP AT 603522

DIN EN STANDARD - OR STEP, SINGLE AND DOUBLE

Fixed connection of the treads with the frame according to DIN EN14183.

The (DIN EN) standard specifies that treads must be firmly connected to the frame.

Removing the tread plate:

Push both fixing clamps underneath the tread plate inwards.

The tread plate is then released from the frame and can be removed.



DOUBLE SURGEON STEPS, STAINLESS STEEL



- Stable 4-footed single step construction, made of 25 mm square tube seamless welded stainless steel
- With removable stainless steel non-slip plate
- Ribbed tread for easy cleaning
- 2 non-slip, non-marking adjustable rubber feet
- 2 conductive polymer screw-in feet

NO. OF STEPS	DIMENSIONS			ORDER CODE
	WIDTH mm	DEPTH mm	HEIGHT mm	
2 steps	605	655	220/440	OP AT 606522-44

BAG CARRIER FOR OR, STAINLESS STEEL



OPWR 165

- Bag carrier for OR, round opening Ø 360 mm
- For disposal of soiled linen and waste in the OR
- Mobile seamless and burr-free tube construction made of stainless steel
- The round opening facilitates disposal of bulky linen in the OR
- Equipped with stainless steel bottom pan and Hammerlit grip ring HR 2000 to securely mount laundry bags and plastic bags

// TECHNICAL DESCRIPTION

- + **Casters** 4 swivel casters, Ø 75 mm, with precision ball bearing
- + **Tread** Thermoplastic conductive rubber profile, wear-resistant, non-marking
- + **Caster housing** Zinc-chromated

NO. OF GRIP RINGS	DIMENSIONS			ORDER CODE
	WIDTH mm	DEPTH mm	HEIGHT mm	
1	410	435	950	OPWR 165
2	660	435	950	OPWR 265



OPW 165

- Bag Carrier for OR
- For disposal of soiled linen and waste in the OR
- Mobile seamless and burr-free tube construction made of stainless steel
- Equipped with stainless steel bottom pan and Hammerlit grip ring HR 2000 to securely mount laundry bags, nets and plastic bags

// TECHNICAL DESCRIPTION

- + **Casters** 4 swivel casters, Ø 75 mm, with precision ball bearing
- + **Tread** Thermoplastic conductive rubber profile, wear-resistant, non-marking
- + **Caster housing** Zinc-chromated

MODEL	NO. OF GRIP RINGS	DIMENSIONS			WEIGHT kg	ORDER CODE	MATCHING LIDS SEE PAGE 76
		WIDTH mm	DEPTH mm	HEIGHT mm			
Base model	1	410	435	950	5	OPW 165	D 60 - D 68
	2	660	435	950	7.5	OPW 265	D 60 - D 68
Hinged model	1	410	475	950	5	OPW 165L	DT 80 - DT 88
	2	660	475	950	7.5	OPW 265L	DT 80 - DT 88
Model with pedal mechanism	1	410	485	950	5	OPW 165LT	DT 80 - DT 88
	2	660	485	950	7.5	OPW 265LT	DT 80 - DT 88
Model with pedal mechanism and lid damping	1	410	485	950	5	OPW 165LTD	DT 80 - DT 88
	2	660	485	950	7.5	OPW 265LTD	DT 80 - DT 88

The depth of the models with hinged lids increases by 40 mm. Models equipped with the pedal mechanism have an additional depth of 50 mm.